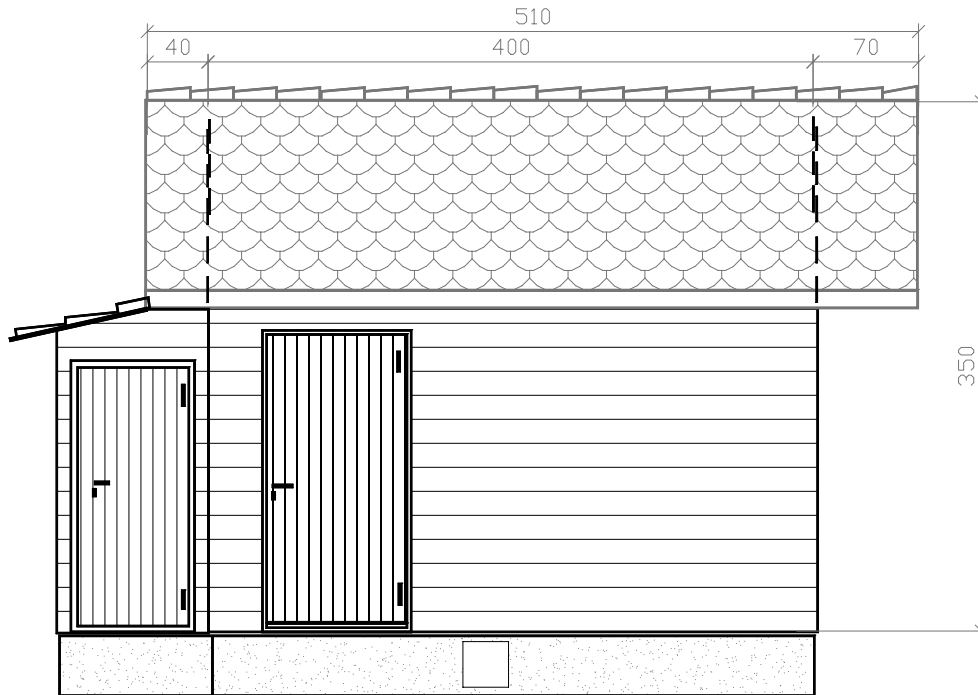
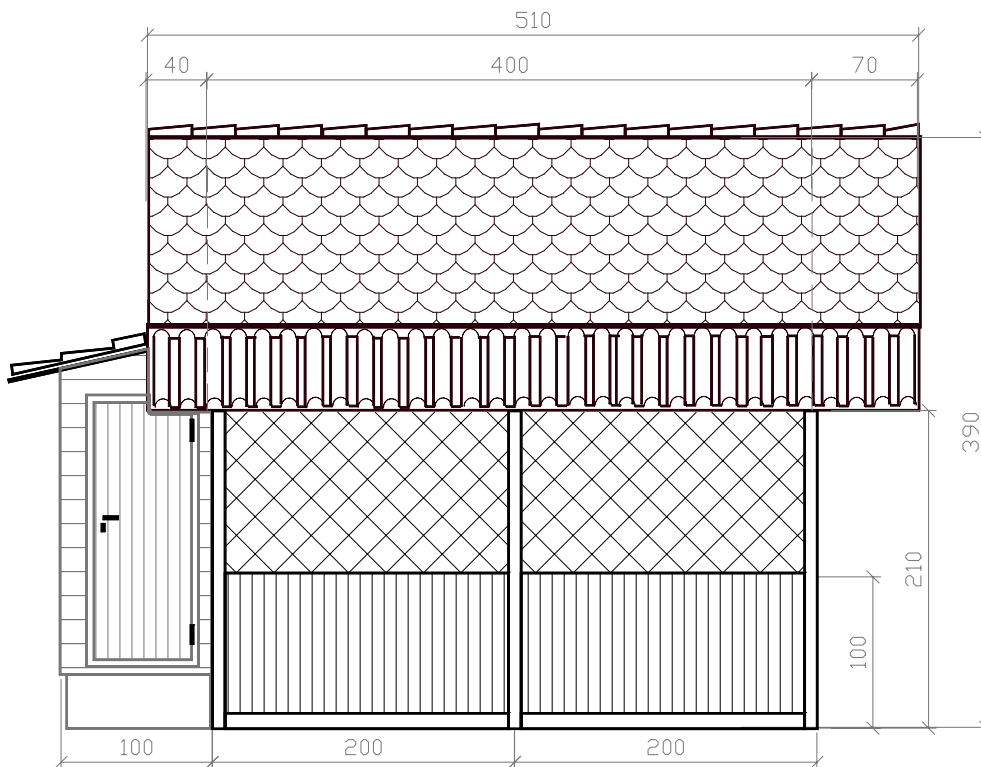


SPECIFICATIONS	CONTRACT NO.	DATE	COMPANY		
Couverture = tuiles	DRAWN BY: F. Schär		Fédération Genevoise des Jardins Familiaux		
Chalet = lales chalet ou madrier LO=4m LA=3m H=3.5m	CHECKED BY:		TITLE Chalet type Fédération		
Base = briques ou béton avec ouvertures de ventilation	DESIGNED BY:		SIZE A4	FSCM NO.	DWG NO. / FILE NAME Chalet. skd
Pergola = couverture scobalit vert croisillons bois	DESIGN ACTIVITY		SCALE 1 : 50	DATE 31.10.2001	SHEET
	CUSTOMER				

Vue Face "A"

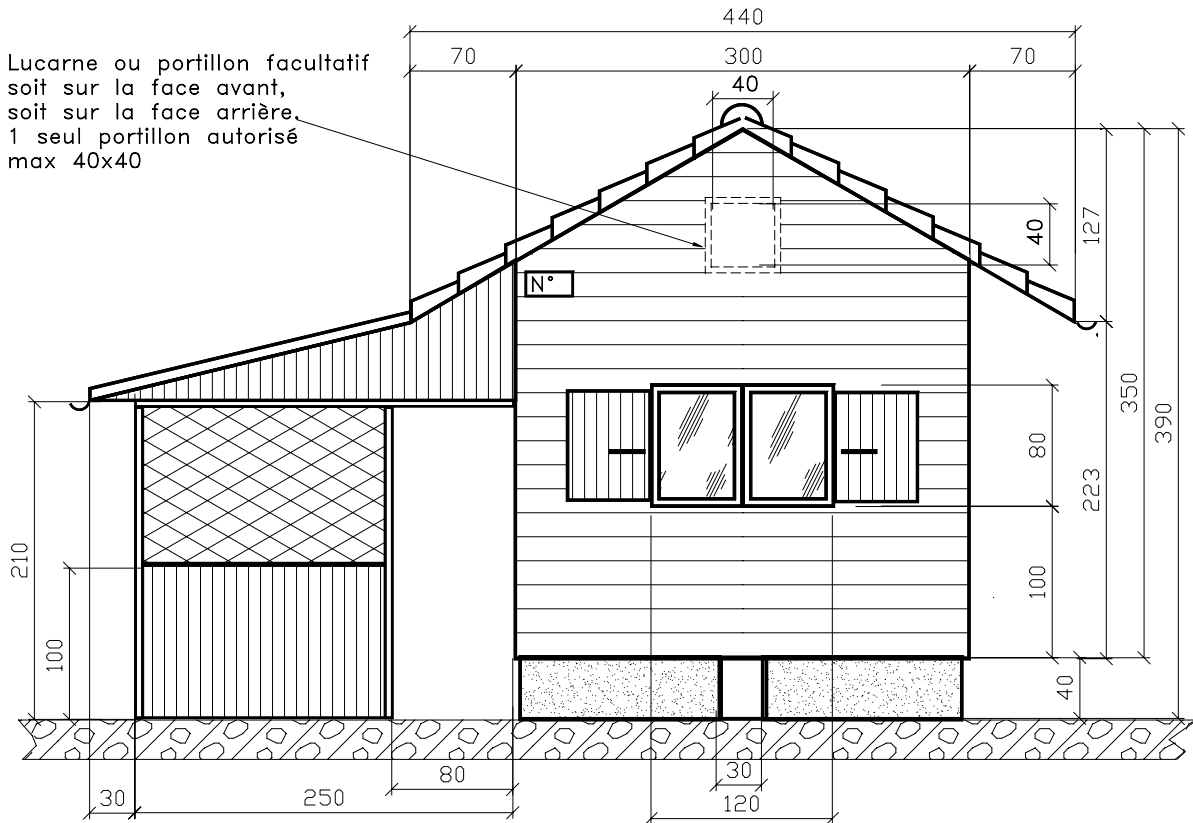


Vue Face "D"

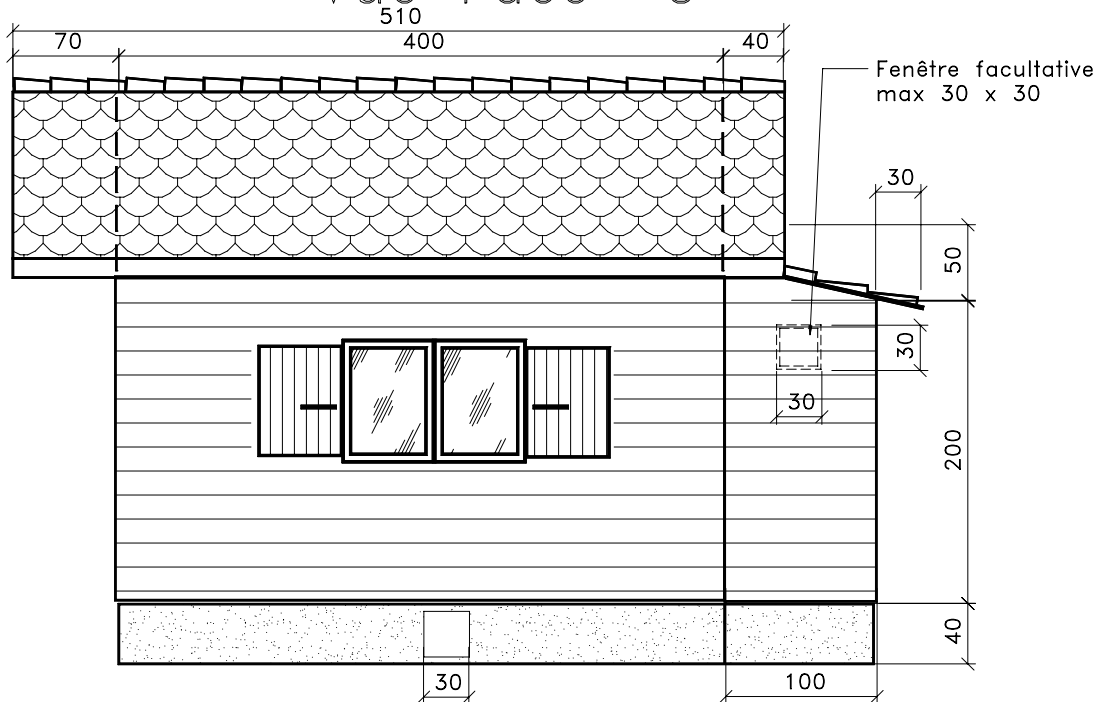


SPECIFICATIONS	CONTRACT NO.	DATE	COMPANY		
Couverture chalet et appentis en tuiles	DRAWN BY: F. Schär	31.10.2001	Fédération Genevoise des Jardins Familiaux		
Chalet = lames chalet ou madrier L=4m P=3m H=3.5m	CHECKED BY: B. Martin	31.10.2001	TITLE Chalet type Fédération		
Base = briques ou béton avec ouvertures de ventilation	DESIGNED BY:		SIZE A4	FSCM NO.	DWG NO. / FILE NAME Dessin N° 1/Chalet1. skd
Pergola: couverture en matière synthétique; croisillons en bois	DESIGN ACTIVITY		SCALE 1 : 50	DATE 31.10.2001	SHEET 1 de 6
	CUSTOMER				

Vue Face "B"

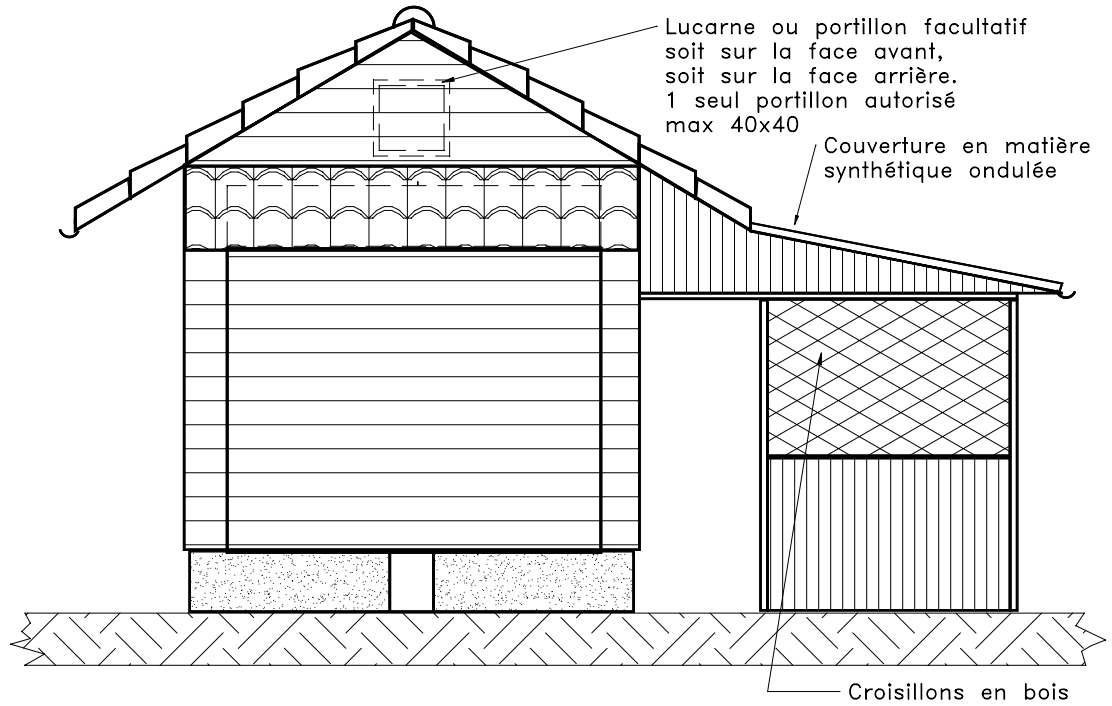


Vue Face "C"

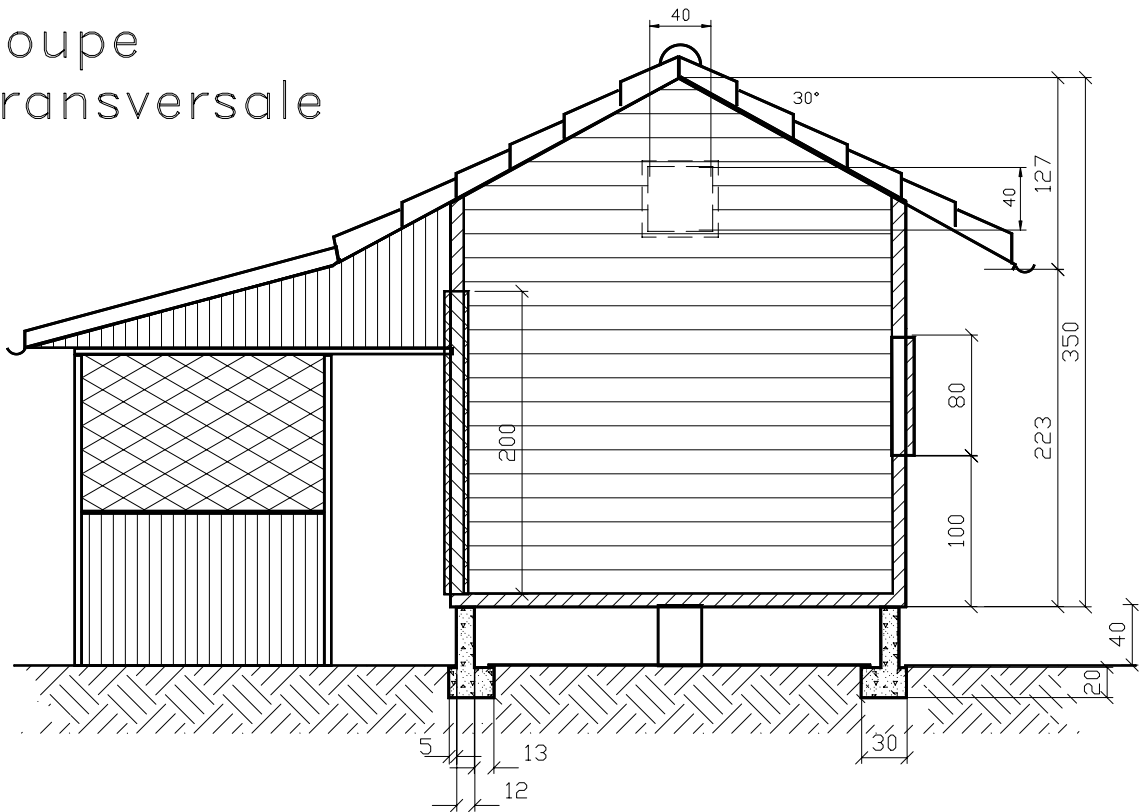


SPECIFICATIONS	CONTRACT NO.	DATE	COMPANY		
Pergola : emprise au sol max. longueur=4m largeur=2.5m	DRAWN BY: F. Schär	31.10.2001	<i>Fédération Genevoise des Jardins Familiaux</i>		
Pergola : fermeture en bois sur max 1m de haut	CHECKED BY: B. Martin	31.10.2001			
Pergola : croisillons obligatoires	DESIGNED BY:		<i>Chalet type Fédération</i>		
Pergola : ouverture et libre passage de 80 des 2 côtés.	DESIGN ACTIVITY		SIZE A4	FSCM NO.	DWG NO. / FILE NAME <i>Dessin N° 2 / Chalet2.skd</i>
Pas de portes !	CUSTOMER		SCALE 1 : 50	DATE 31.10.2001	SHEET 2 de 6

Vue Face "E"

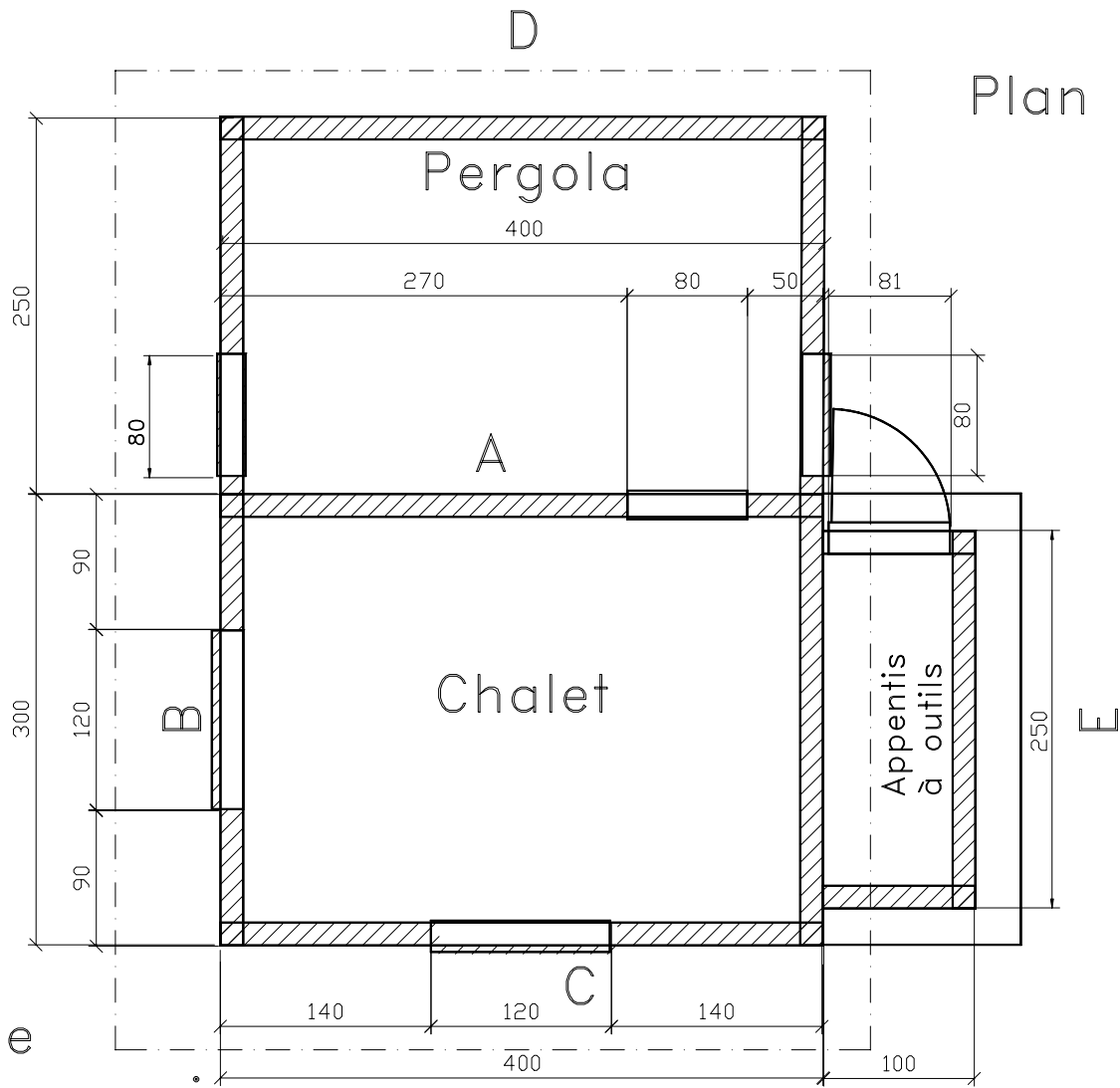


Coupe Transversale

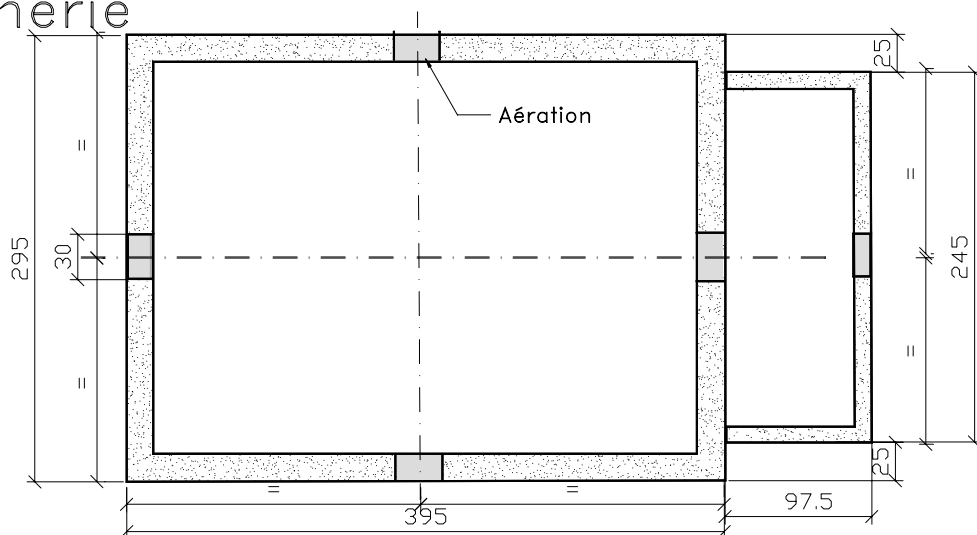


SPECIFICATIONS	CONTRACT NO.	DATE	COMPANY		
	DRAWN BY: F. Schär	31.10.2001	Fédération Genevoise des Jardins Familiaux		
	CHECKED BY: B. Martin	31.10.2001	TITLE		
	DESIGNED BY:		Chalet type Fédération		
	DESIGN ACTIVITY		SIZE	FSCM NO.	DWG NO. / FILE NAME
	CUSTOMER		A4		Dessin N° 3 / Chalet3.skd
			SCALE	DATE	SHEET
			1 : 50	31.10.2001	3 de 6

Plan

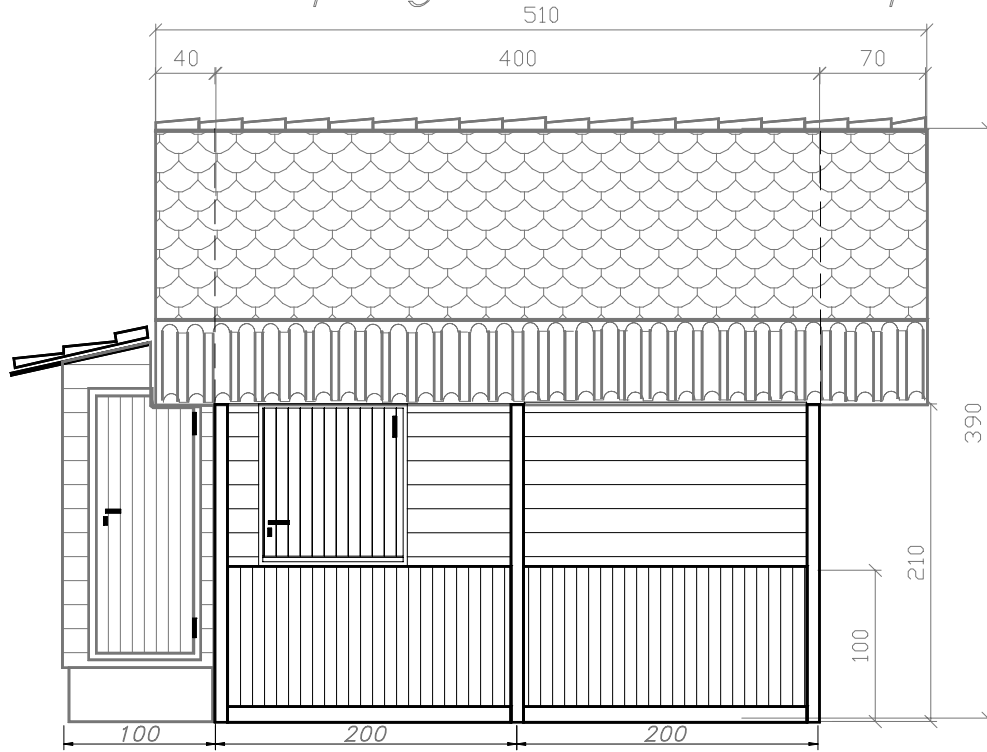


Base
maçonnerie



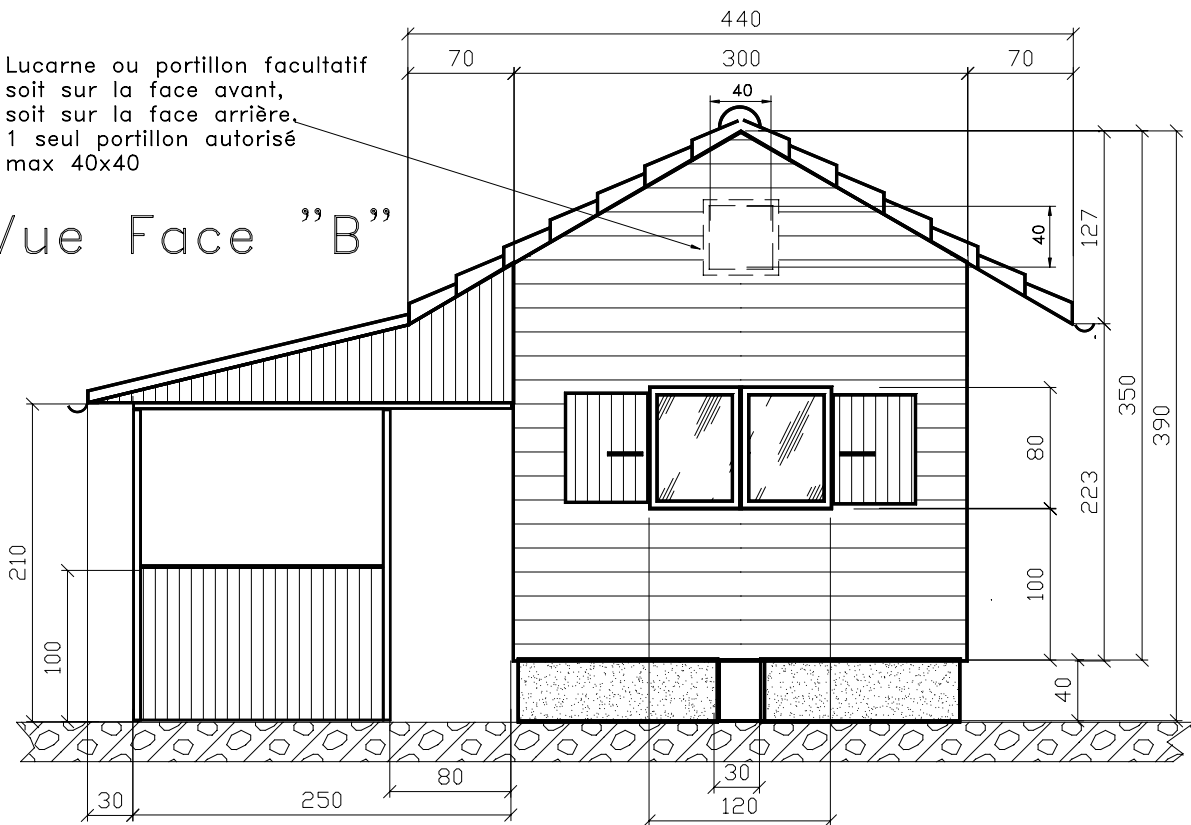
SPECIFICATIONS	CONTRACT NO.	DATE	COMPANY		
Base : maçonnerie avec aérations	DRAWN BY: F. Schär	31.10.2001	Fédération Genevoise des Jardins Familiaux		
	CHECKED BY: B. Martin	31.10.2001			
	DESIGNED BY:		TITLE Chalet type Fédération		
	DESIGN ACTIVITY		SIZE A4	FSCM NO.	DWG NO. / FILE NAME Dessin N° 4 / Chalet4.skd
	CUSTOMER		SCALE 1 : 50	DATE 31.10.2001	SHEET 4 de 6

Vue Face "D" pergola fermeture partielle



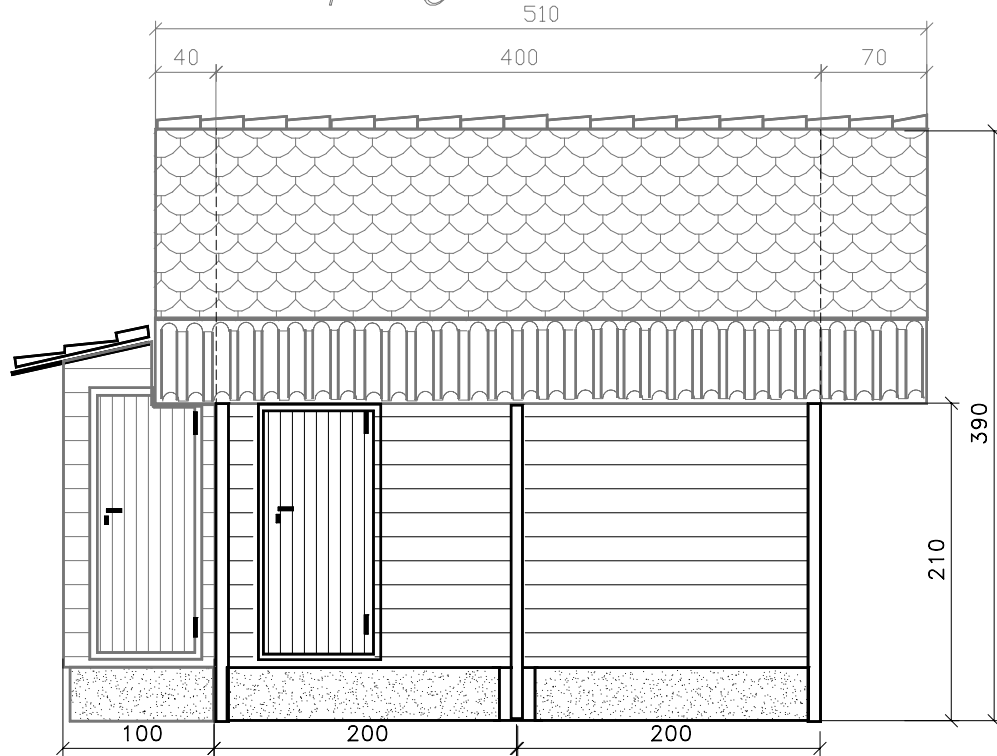
Lucarne ou portillon facultatif
soit sur la face avant,
soit sur la face arrière.
1 seul portillon autorisé
max 40x40

Vue Face "B"



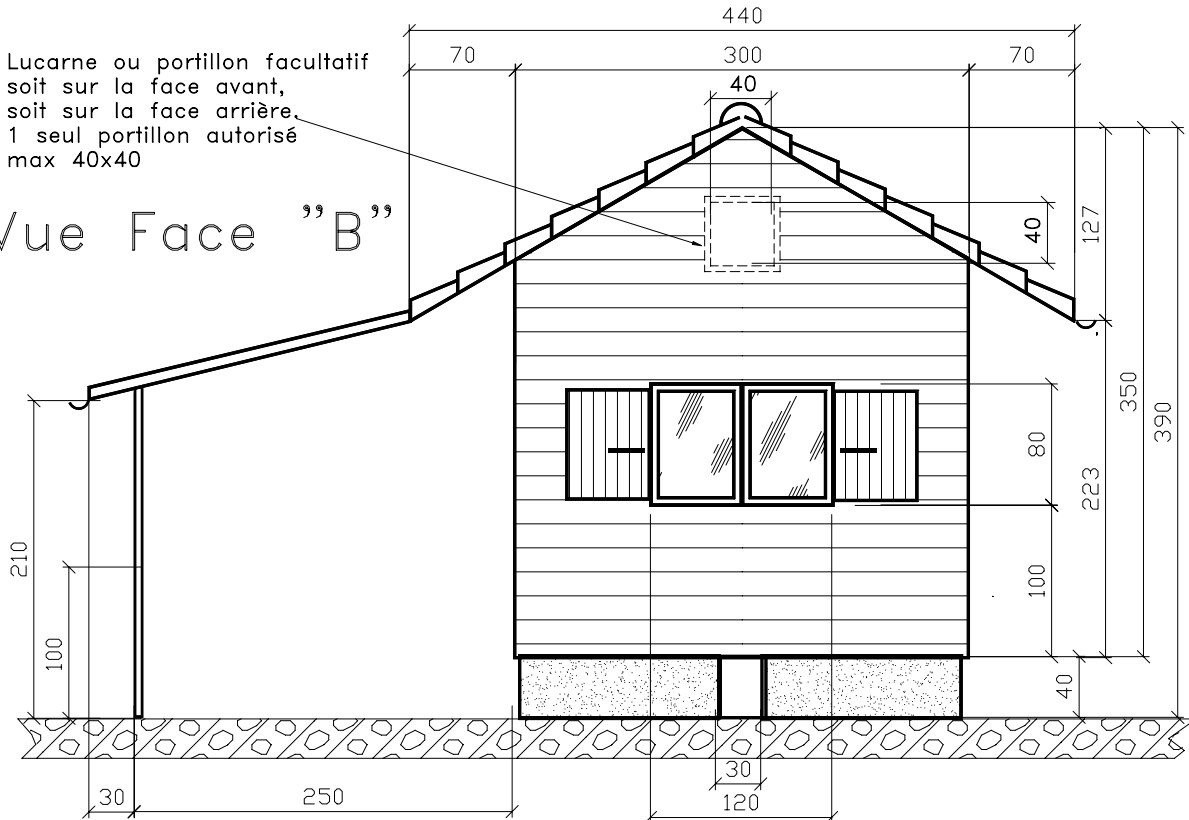
SPECIFICATIONS	CONTRACT NO.	DATE	COMPANY		
Pergola : fermeture partielle	DRAWN BY: F. Schär	31.10.2001	Fédération Genevoise des Jardins Familiaux		
	CHECKED BY: B. Martin	31.10.2001	TITLE Chalet type Fédération		
	DESIGNED BY:		SIZE A4	FSCM NO.	DWG NO. / FILE NAME Dessin N° 5 / Chalet5.skd
	DESIGN ACTIVITY		SCALE 1 : 50	DATE 31.10.2001	SHEET 5 de 6
	CUSTOMER				

Vue Face "D" pergola sans fermeture



Lucarne ou portillon facultatif
soit sur la face avant,
soit sur la face arrière.
1 seul portillon autorisé
max 40x40

Vue Face "B"



SPECIFICATIONS	CONTRACT NO.	DATE	COMPANY		
Pergola : ouverte supportée par 3 montants en bois	DRAWN BY: F. Schär	31.10.2001	Fédération Genevoise des Jardins Familiaux		
	CHECKED BY: B. Martin	31.10.2001	TITLE Chalet type Fédération		
	DESIGNED BY:		SIZE A4	FSCM NO.	DWG NO. / FILE NAME Dessin N° 6 / Chalet6.skd
	DESIGN ACTIVITY		SCALE 1 : 50	DATE 31.10.2001	SHEET 6 de 6
	CUSTOMER				